

TOWN OF CAPE ELIZABETH SHORE ROAD PATHWAY IMPROVEMENTS

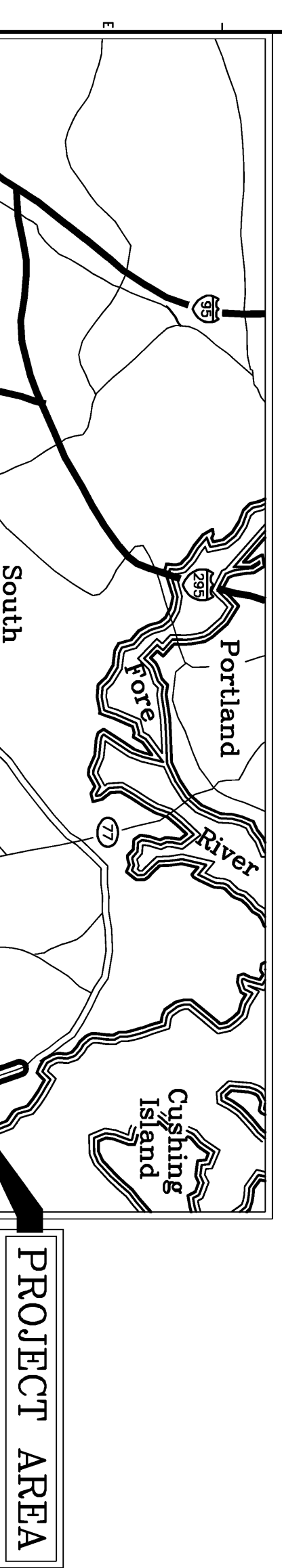
Cape Elizabeth, Maine

Prepared For:

TOWN OF CAPE ELIZABETH



LOCATION MAP
SCALE: 1" = 100'



PROJECT AREA

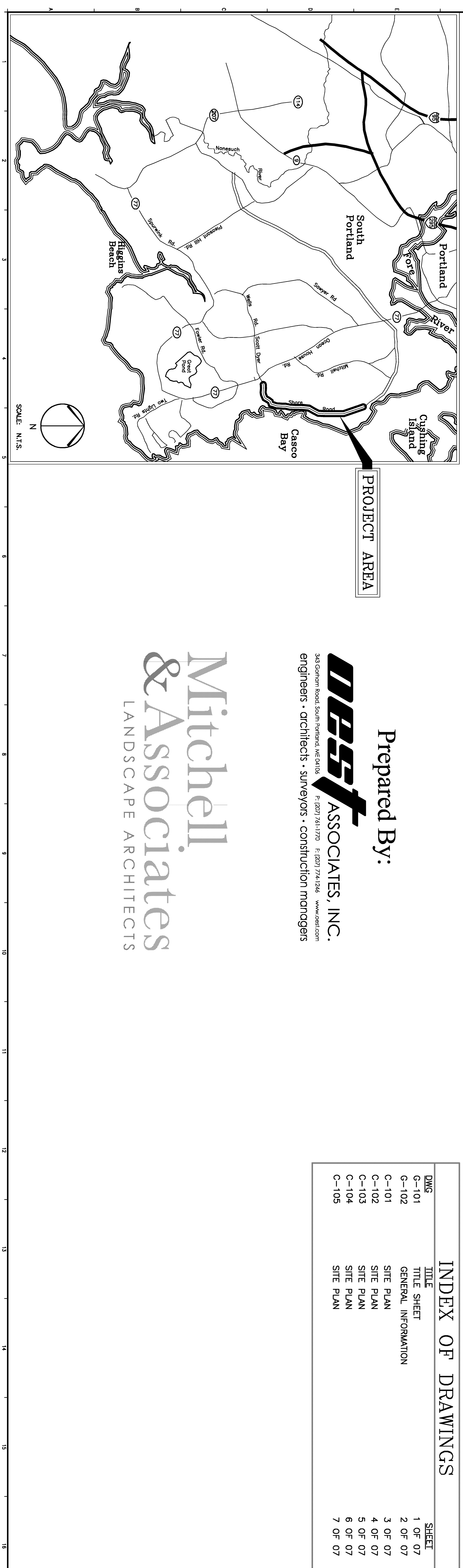
Prepared By:

West ASSOCIATES, INC.
343 Gorham Road, South Portland, ME 04106
P: (207) 761-1770 F: (207) 774-1246 www.ouest.com
engineers • architects • surveyors • construction managers

Mitchell & Associates
LANDSCAPE ARCHITECTS

DWG	TITLE	SHEET
G-101	TITLE SHEET	1 OF 07
G-102	GENERAL INFORMATION	2 OF 07
C-101	SITE PLAN	3 OF 07
C-102	SITE PLAN	4 OF 07
C-103	SITE PLAN	5 OF 07
C-104	SITE PLAN	6 OF 07
C-105	SITE PLAN	7 OF 07

INDEX OF DRAWINGS



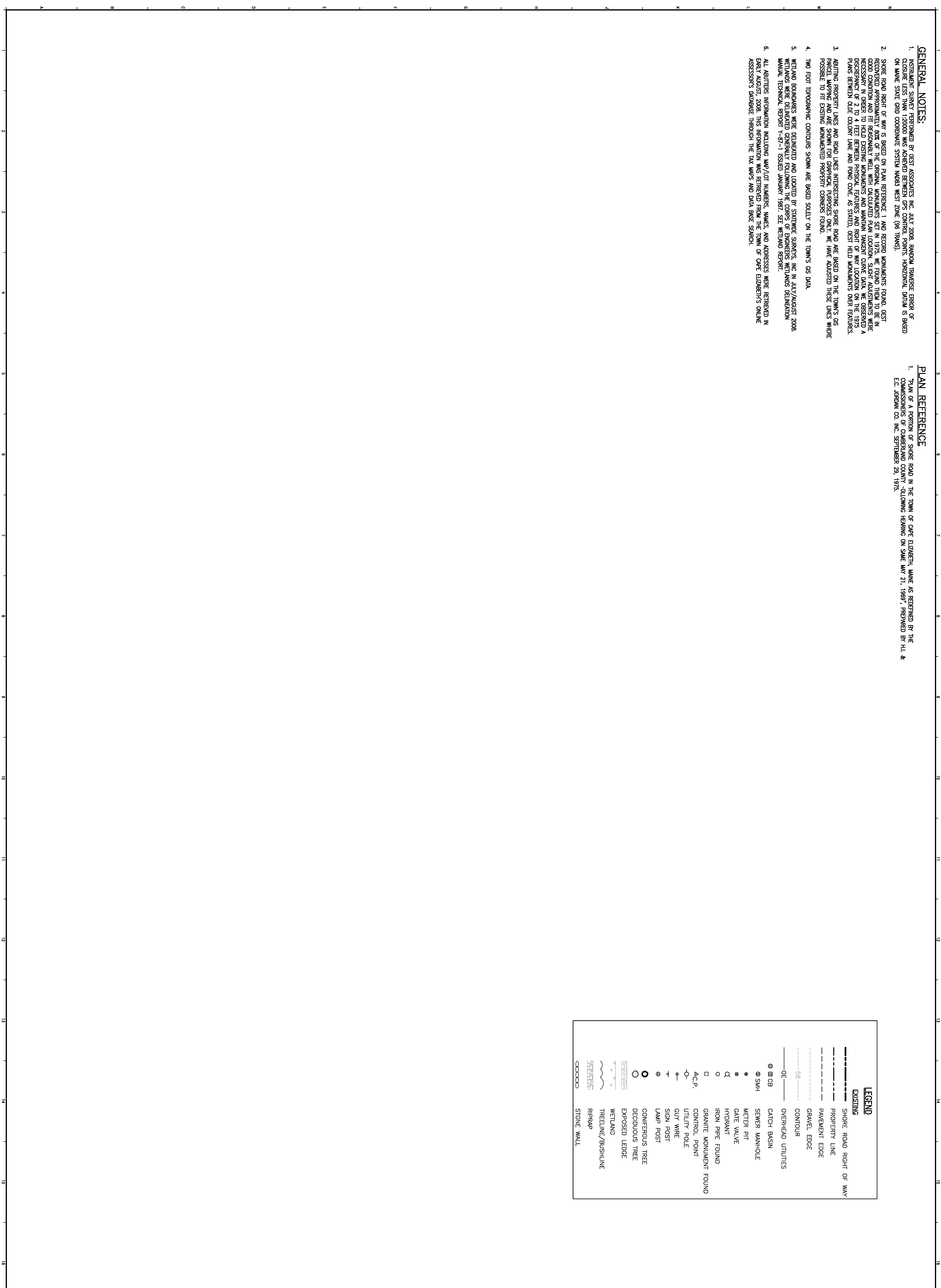
PROJECT: TOWN OF CAPE ELIZABETH SHORE ROAD PATHWAY IMPROVEMENTS SHORE ROAD CAPE ELIZABETH, MAINE 04107	CURRENT ISSUE STATUS: REVISED PER COMMENTS 9-2-08 FOR TOWN REVIEW 8-19-08 REVISION ISSUE DESCRIPTION DATE	West ASSOCIATES, INC. 343 Gorham Road, South Portland, ME 04106 P: (207) 761-1770 F: (207) 774-1246 www.ouest.com engineers • architects • surveyors • construction managers
	PROJECT NUMBER: 3607101 PROJECT MANAGER: SMH DATE OF RECORD: SMH DRAWN BY: 3607101-01 CAD FILE: 3607101-01 SCALE: AS NOTED GRAPHIC SCALE:	
TITLE: TITLE SHEET DRAWING NO.: G-101 SHEET: 01 OF 07	TITLE: TITLE SHEET DRAWING NO.: G-101 SHEET: 01 OF 07	PLEASE NOTE: THIS DOCUMENT MAY NOT ACCURATELY REPRESENT THE FINAL DOCUMENT. ONLY AN ENGINEER, ARCHITECT OR SURVEYOR SIGNED, SEALED AND DATED PAPER COPY, PROVIDED BY THIS OFFICE, MAY BE UTILIZED FOR BIDDING OR CONSTRUCTION PURPOSES.

- GENERAL NOTES:**
1. INSTRUMENT SURVEY PERFORMED BY GEST ASSOCIATES, INC. JULY 2008. RANDOM TRANSVERSE ERROR OF CLOSURE LESS THAN 1:20000 WAS ACHIEVED BETWEEN GPS CONTROL POINTS. HORIZONTAL DATUM IS BASED ON MAINE STATE GRID COORDINATE SYSTEM WAD83 WEST ZONE (96 TRANS).
 2. SHORE ROAD RIGHT OF WAY IS BASED ON PLAN REFERENCE 1 AND RECORD MONUMENTS FOUND. GEST RECOVERED APPROXIMATELY 80% OF THE ORIGINAL MONUMENTS SET IN 1975. WE FOUND THEM TO BE IN GOOD CONDITION AND FIT REASONABLY WELL WITH CALCULATED PLAN LOCATION. SLIGHT ADJUSTMENTS WERE NECESSARY IN ORDER TO HOLD EXISTING MONUMENTS AND MAINTAIN ANGLES. CORNER DATA WE OBSERVED A DISCREPANCY OF 2 TO 4 FEET BETWEEN PHYSICAL FEATURES AND RIGHT OF WAY LOCATION ON THE 1975 PLANS BETWEEN GULF COLONY LAKE AND FOND COLE. AS STATED, GEST FIELD MONUMENTS OVER FEATURES.
 3. ADJUTING PROPERTY LINES AND ROAD LINES INTERSECTING SHORE ROAD ARE BASED ON THE TOWN'S GIS PARCEL MAPPING AND ARE SHOWN FOR GRAPHICAL PURPOSES ONLY. WE HAVE ADJUSTED THESE LINES WHERE POSSIBLE TO FIT EXISTING MONUMENTED PROPERTY CORNERS FOUND.
 4. TWO FOOT TOPOGRAPHIC CONTOURS SHOWN ARE BASED SOLELY ON THE TOWN'S GIS DATA.
 5. WETLAND BOUNDARIES WERE DELINEATED AND LOCATED BY STATEWIDE SURVEYS, INC. IN JULY/AUGUST 2008. WETLANDS WERE DELINEATED GENERALLY FOLLOWING THE CORPS OF ENGINEERS WETLANDS DELINEATION MANUAL TECHNICAL REPORT 1-87-1 ISSUED JANUARY 1987. SEE WETLAND REPORT.
 6. ALL ADJUTERS INFORMATION INCLUDING MAP/LOT NUMBERS, NAMES, AND ADDRESSES WERE RETRIEVED IN DATE AUGUST 2008. THIS INFORMATION WAS RETRIEVED FROM THE TOWN OF CAPE ELIZABETH'S ONLINE ASSESSOR'S DATABASE THROUGH THE TAX MAPS AND DATA BASE SEARCH.

- PLAN REFERENCE**
1. PLAN OF A PORTION OF SHORE ROAD IN THE TOWN OF CAPE ELIZABETH, MAINE AS REOPENED BY THE COMMISSIONERS OF CUMBERLAND COUNTY - FOLLOWING HEARING ON SAME MAY 21, 1989*, PREPARED BY H.L. & E.C. JORDAN CO. INC. SEPTEMBER 29, 1975.

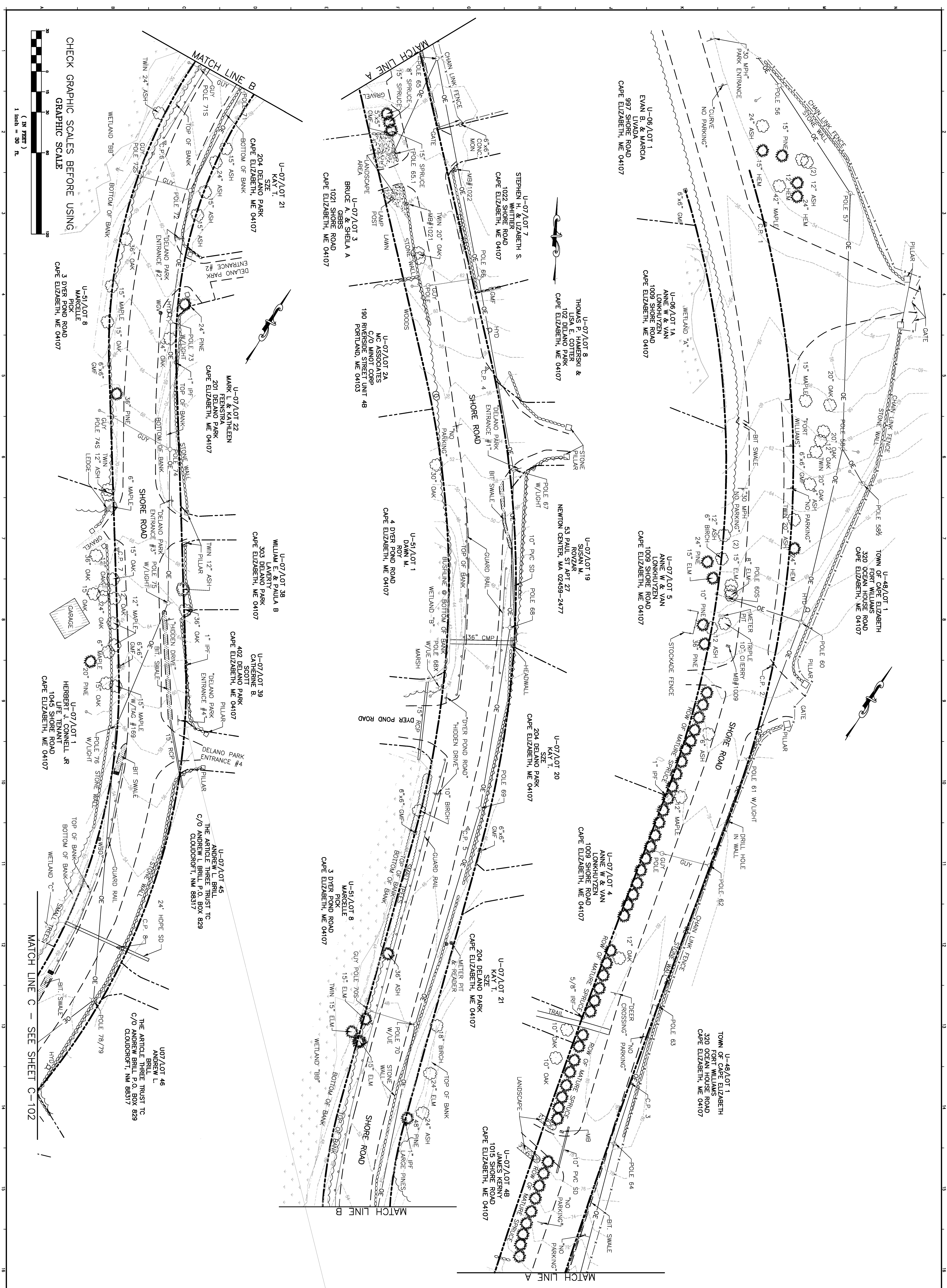
LEGEND

---	EXISTING
---	SHORE ROAD RIGHT OF WAY
---	PROPERTY LINE
---	PAVEMENT EDGE
---	GRAVEL EDGE
---	CONTOUR
---	OVERHEAD UTILITIES
⊕	CATCH BASIN
⊙	SEWER MANHOLE
⊙	METER PIT
⊙	GATE VALVE
⊙	HYDRANT
⊙	IRON PIPE FOUND
⊙	GRANITE MONUMENT FOUND
⊙	CONTROL POINT
⊙	UTILITY POLE
⊙	GUY WIRE
⊙	SIGN POST
⊙	LAMP POST
⊙	CONIFEROUS TREE
⊙	DECIDUOUS TREE
⊙	EXPOSED LEDGE
⊙	WETLAND
⊙	TREELINE/BUSHLINE
⊙	RIPPRAP
⊙	STONE WALL



PROJECT: TOWN OF CAPE ELIZABETH SHORE ROAD PATHWAY IMPROVEMENTS SHORE ROAD CAPE ELIZABETH, MAINE 04107	CURRENT ISSUE STATUS:
	REVISED PER COMMENTS 9-2-08 FOR TOWN REVIEW 8-19-08 REVISION ISSUE DESCRIPTION DATE
PROJECT NUMBER: 3607101 PROJECT MANAGER: SMH TYPE OF RECORD: SMH DRAWN BY: GJM CDD FILE: 3607101S-102 SCALE: AS NOTED GRAPHIC SCALE:	REV 1 0
DRAWING NO: G-102 SHEET: 02 OF 07	TITLE: GENERAL INFORMATION

gest ASSOCIATES, INC.
 343 Gorham Road, South Portland, ME 04106 P: (207) 761-1770 F: (207) 774-1246 www.gest.com
 engineers • architects • surveyors • construction managers



CHECK GRAPHIC SCALES BEFORE USING
 GRAPHIC SCALE
 1 inch = 50 ft

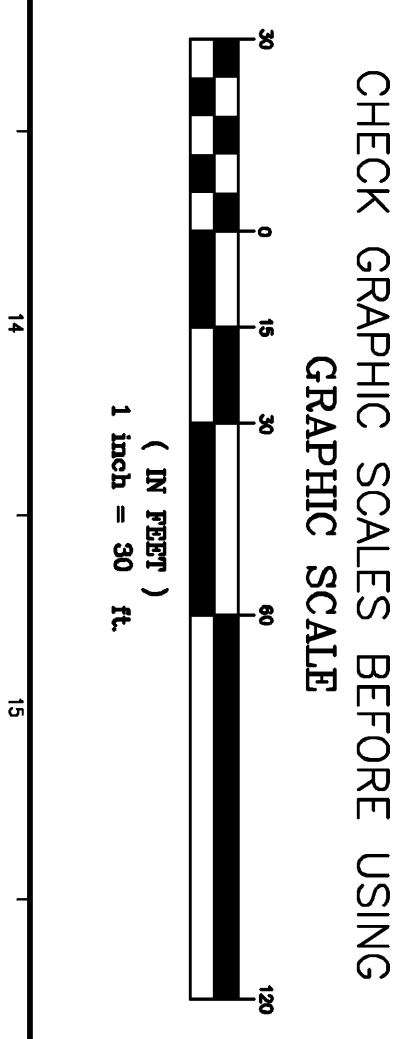
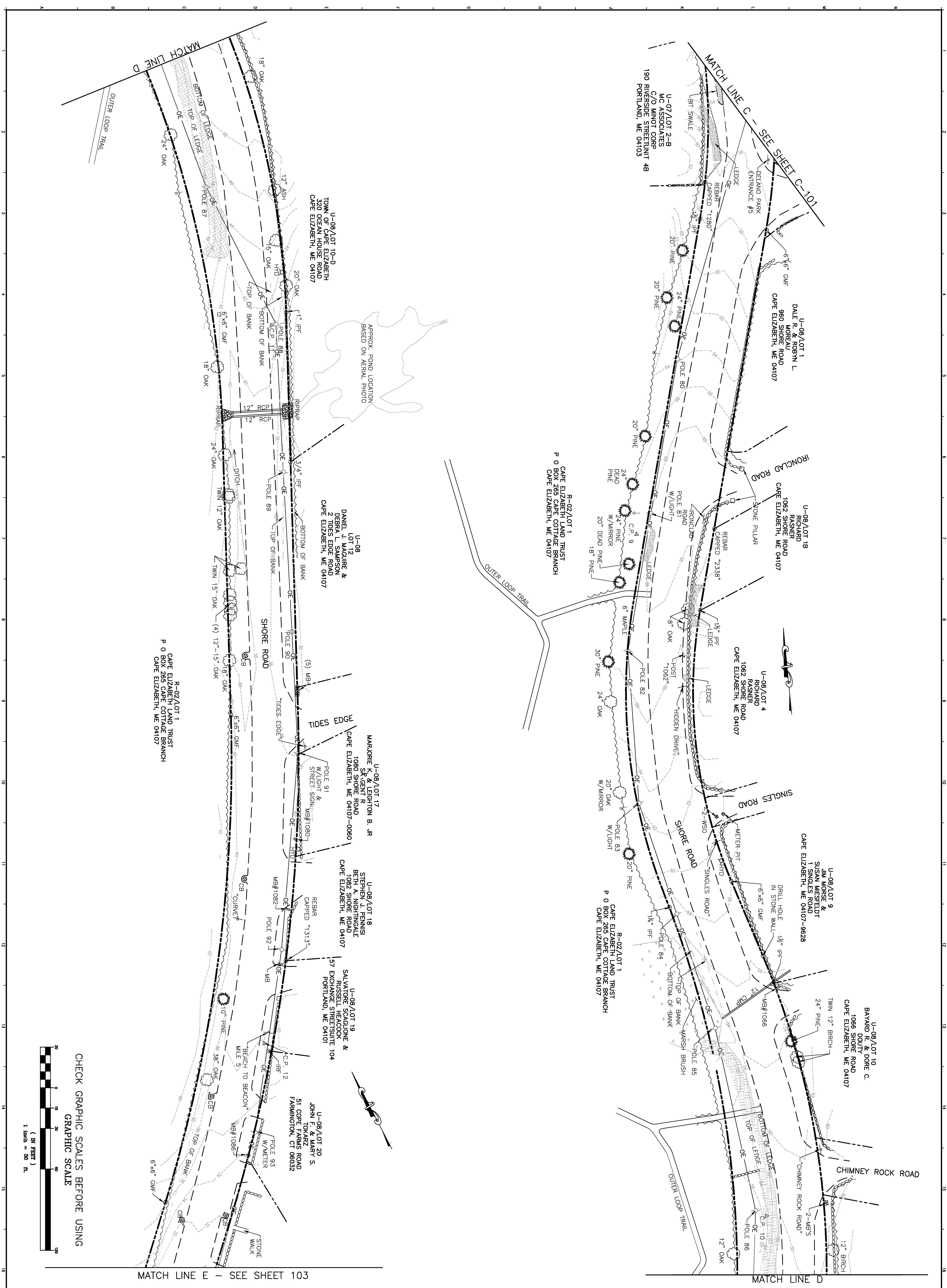
PROJECT NUMBER: 3607101	REVISED PER COMMENTS	8-2-08
PROJECT MANAGER: SMH	FOR TOWN REVIEW	8-19-08
DATE OF RECORD: SMH	REVISION ISSUE DESCRIPTION	DATE
DRAWN BY: 3607101-101		
SCALE: 3607101-101		
GRAPHIC SCALE: 1"=30'		

CURRENT ISSUE STATUS:	
PROJECT:	TOWN OF CAPE ELIZABETH SHORE ROAD PATHWAY IMPROVEMENTS SHORE ROAD CAPE ELIZABETH, MAINE 04107

DRAWING NO:	C-101
TITLE:	SITE PLAN

nest ASSOCIATES, INC.
 343 Gorham Road, South Portland, ME 04106 P: (207) 761-1770 F: (207) 774-1246 www.nest.com
 engineers • architects • surveyors • construction managers

PLEASE NOTE: THIS DOCUMENT MAY NOT ACCURATELY REPRESENT THE FINAL DOCUMENT. ONLY AN ENGINEER, ARCHITECT OR SURVEYOR SIGNED, SEALED AND DATED PAPER COPY, PROVIDED BY THIS OFFICE, MAY BE UTILIZED FOR BIDDING OR CONSTRUCTION PURPOSES.

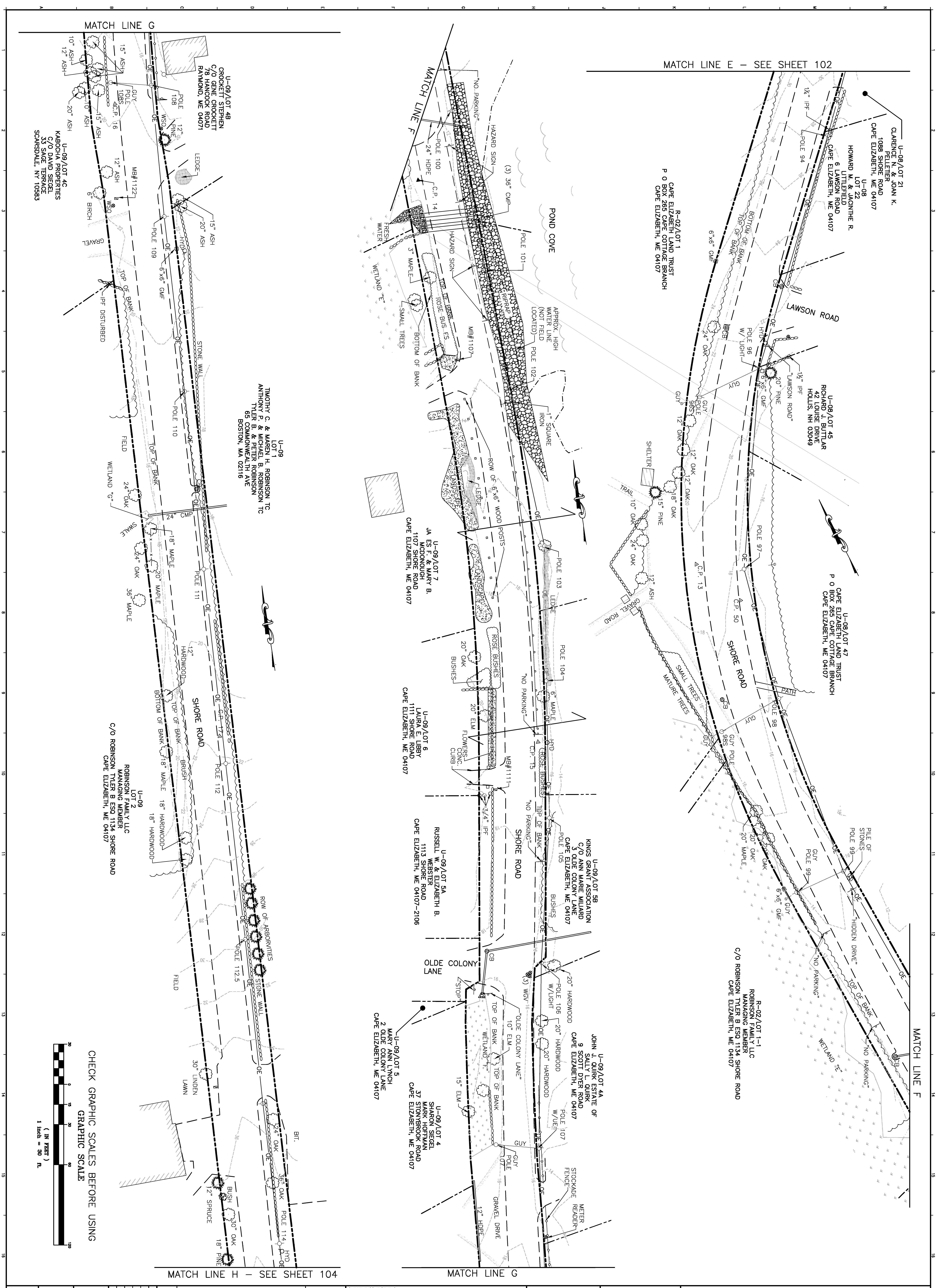


PROJECT:		TOWN OF CAPE ELIZABETH SHORE ROAD PATHWAY IMPROVEMENTS SHORE ROAD CAPE ELIZABETH, MAINE 04107	
CURRENT ISSUE STATUS:		REVISED PER COMMENTS 9-2-08 FOR TOWN REVIEW 8-19-08 REVISION ISSUE DESCRIPTION DATE	
PROJECT NUMBER:	3607101	DATE OF RECORD:	08M
PROJECT MANAGER:	SM	DRAWN BY:	3607101C-102
DATE OF RECORD:	08M	SCALE:	1"=30'
DRAWN BY:	3607101C-102	GRAPHIC SCALE:	
DATE OF RECORD:	08M	TITLE:	SITE PLAN
DRAWN BY:	3607101C-102	DRAWING NO.:	C-102
DATE OF RECORD:	08M	SHEET:	04 OF 07

nest ASSOCIATES, INC.
 343 Gorham Road, South Portland, ME 04106 P: (207) 761-1770 F: (207) 774-1246 www.nest.com
 engineers • architects • surveyors • construction managers

PROGRESS PRINT

PLEASE NOTE: THIS DOCUMENT MAY NOT ACCURATELY REPRESENT THE FINAL DOCUMENT. ONLY AN ENGINEER, ARCHITECT OR SURVEYOR SIGNED, SEALED AND DATED PAPER COPY, PROVIDED BY THIS OFFICE, MAY BE UTILIZED FOR BIDDING OR CONSTRUCTION PURPOSES.



PROJECT NUMBER: 3607101		REVISED PER COMMENTS: 9-2-08	
PROJECT MANAGER: SM		FOR TOWN REVIEW: 8-19-08	
DATE OF RECORD: 08M		REVISION ISSUE DESCRIPTION: DATE	
DRAWN BY: 3607101-103			
C/O FILE: 3607101-103			
SCALE: 1"=30'			
GRAPHIC SCALE:			
TITLE: SITE PLAN			
DRAWING NO: C-103			
SHEET: 05 OF 07			

CURRENT ISSUE STATUS:	
PROJECT:	TOWN OF CAPE ELIZABETH SHORE ROAD PATHWAY IMPROVEMENTS SHORE ROAD CAPE ELIZABETH, MAINE 04107

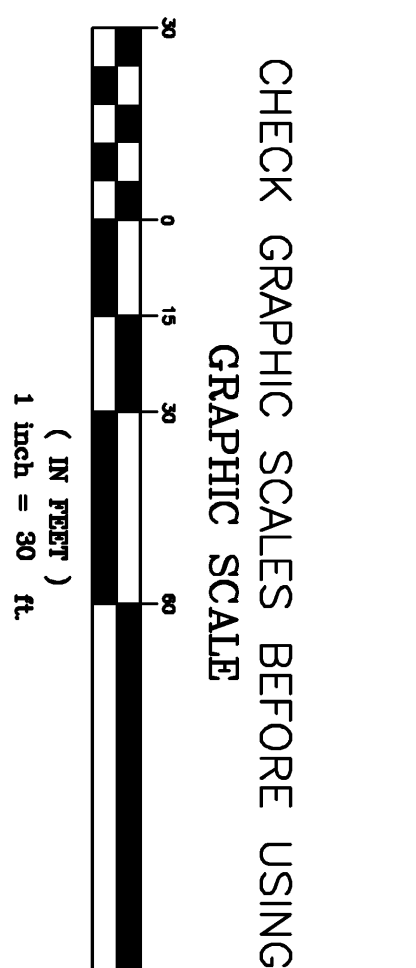
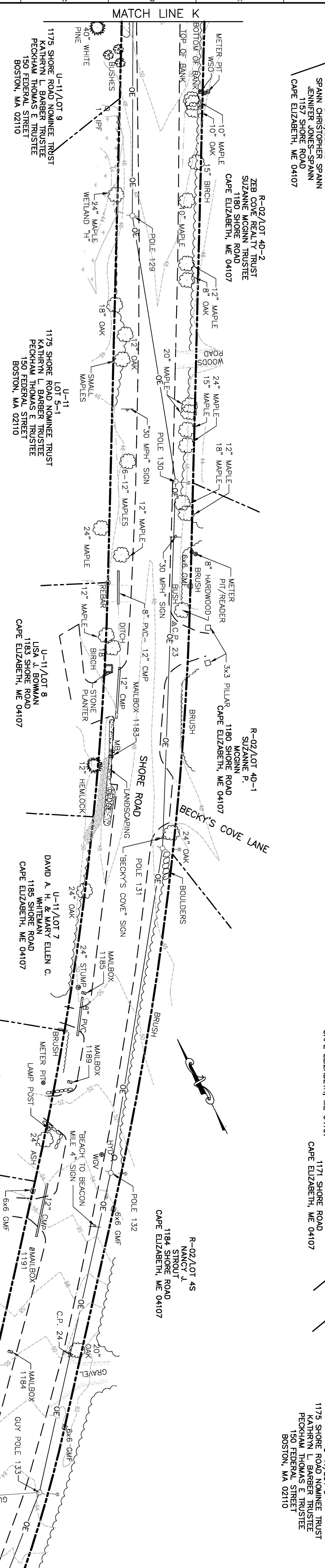
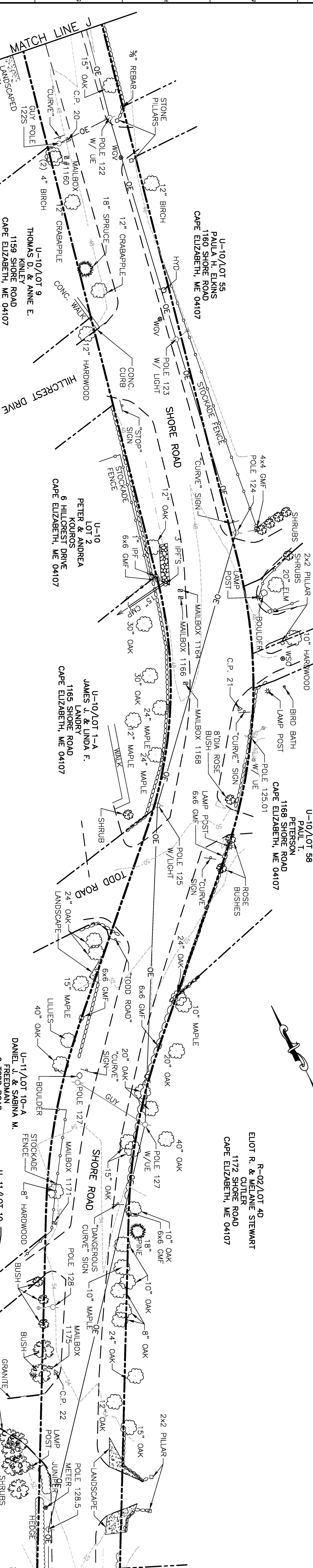
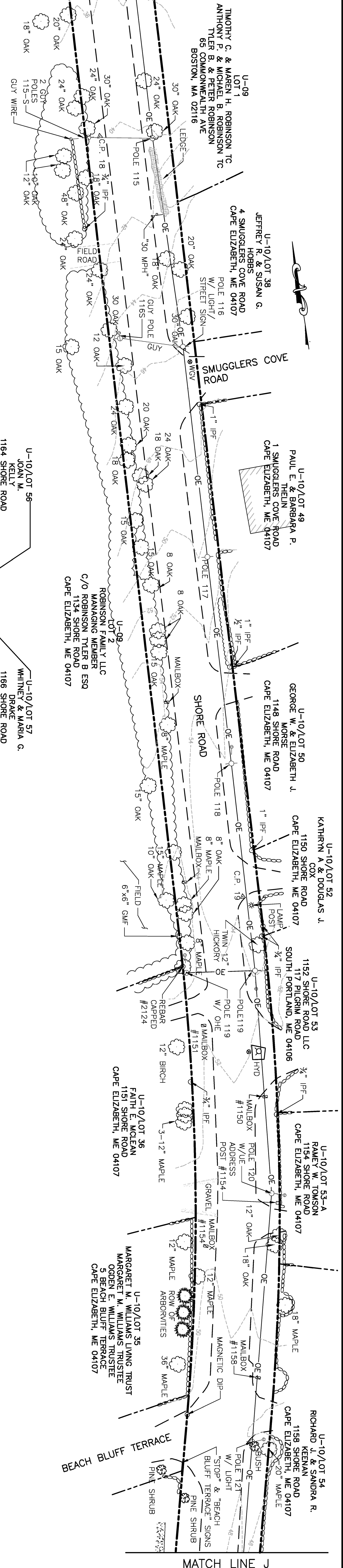
nest ASSOCIATES, INC.

343 Gorham Road, South Portland, ME 04106 P: (207) 761-1770 F: (207) 774-1246 www.nest.com

engineers • architects • surveyors • construction managers

PLEASE NOTE: THIS DOCUMENT MAY NOT ACCURATELY REPRESENT THE FINAL DOCUMENT. ONLY AN ENGINEER, ARCHITECT OR SURVEYOR SIGNED, SEALED AND DATED PAPER COPY, PROVIDED BY THIS OFFICE, MAY BE UTILIZED FOR BIDDING OR CONSTRUCTION PURPOSES.

MATCH LINE H - SEE SHEET 103

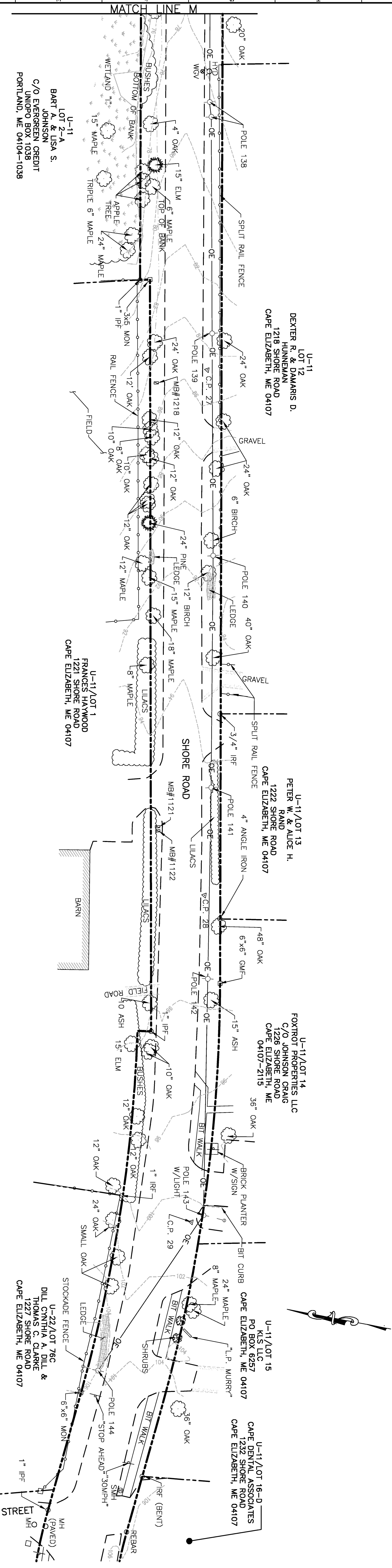
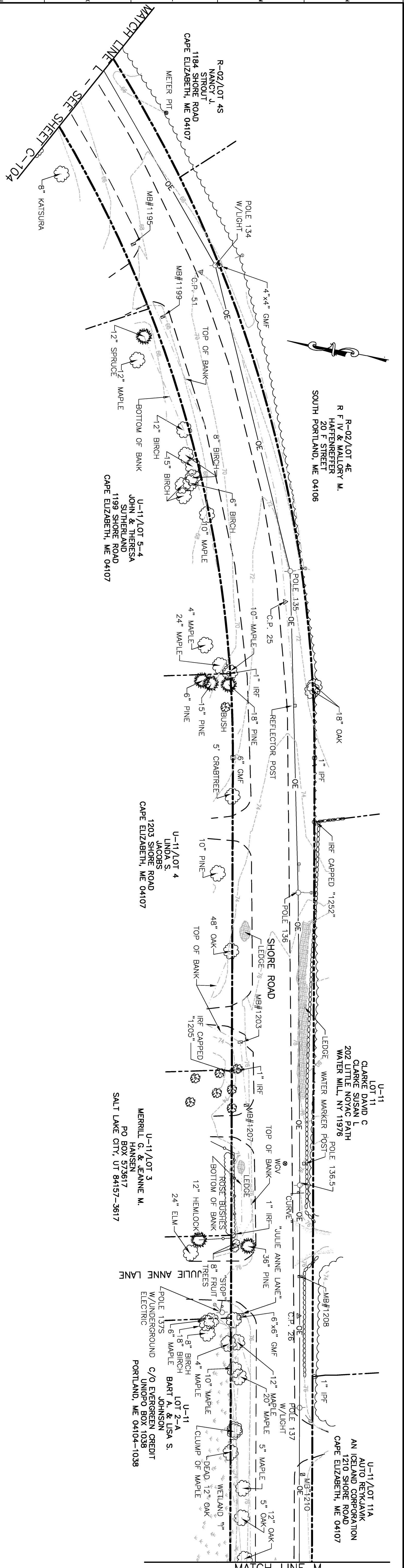


A B C D E F G H I J K L

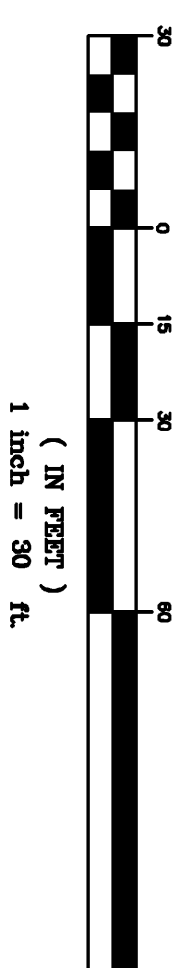
DRAWING NO: C-104		SHEET: 06 OF 07	
TITLE: SITE PLAN		PROJECT: TOWN OF CAPE ELIZABETH SHORE ROAD PATHWAY IMPROVEMENTS	
CURRENT ISSUE STATUS:		DATE	
REVISED PER COMMENTS	9-2-08	FOR TOWN REVIEW	8-19-08
REVISION ISSUE DESCRIPTION			
PROJECT NUMBER: 3607101		PROJECT MANAGER: SM	
DATE OF RECORD: 08/01/08		SCALE: 3607101-104	
GRAPHIC SCALE: 1"=50'			

nest ASSOCIATES, INC.
 343 Gorham Road, South Portland, ME 04106 P: (207) 761-1770 F: (207) 774-1246 www.nest.com
 engineers • architects • surveyors • construction managers

PLEASE NOTE: THIS DOCUMENT MAY NOT ACCURATELY REPRESENT THE FINAL DOCUMENT. ONLY AN ENGINEER, ARCHITECT OR SURVEYOR SIGNED, SEALED AND DATED PAPER COPY, PROVIDED BY THIS OFFICE, MAY BE UTILIZED FOR BIDDING OR CONSTRUCTION PURPOSES.



CHECK GRAPHIC SCALES BEFORE USING
GRAPHIC SCALE



1 2 3 4 5 6 7 8 9 10 11 12 13 14 15 16

REV	DATE	DESCRIPTION
1	9-2-08	REVISED PER COMMENTS
0	8-19-08	FOR TOWN REVIEW
		REVISION ISSUE DESCRIPTION

PROJECT: TOWN OF CAPE ELIZABETH
SHORE ROAD PATHWAY IMPROVEMENTS
SHORE ROAD CAPE ELIZABETH, MAINE 04107

PROJECT NUMBER: 3607101
PROJECT MANAGER: SMH
DATE OF RECORD: SMH
DRAWN BY: SMH
ADO FILE: 3607101-105
SCALE: 1"=30'

nest ASSOCIATES, INC.
343 Gorham Road, South Portland, ME 04106 P: (207) 761-1770 F: (207) 774-1246 www.nest.com
engineers • architects • surveyors • construction managers

PROGRESS PRINT

PLEASE NOTE: THIS DOCUMENT MAY NOT ACCURATELY REPRESENT THE FINAL DOCUMENT. ONLY AN ENGINEER, ARCHITECT OR SURVEYOR SIGNED, SEALED AND DATED PAPER COPY, PROVIDED BY THIS OFFICE, MAY BE UTILIZED FOR BIDDING OR CONSTRUCTION PURPOSES.