



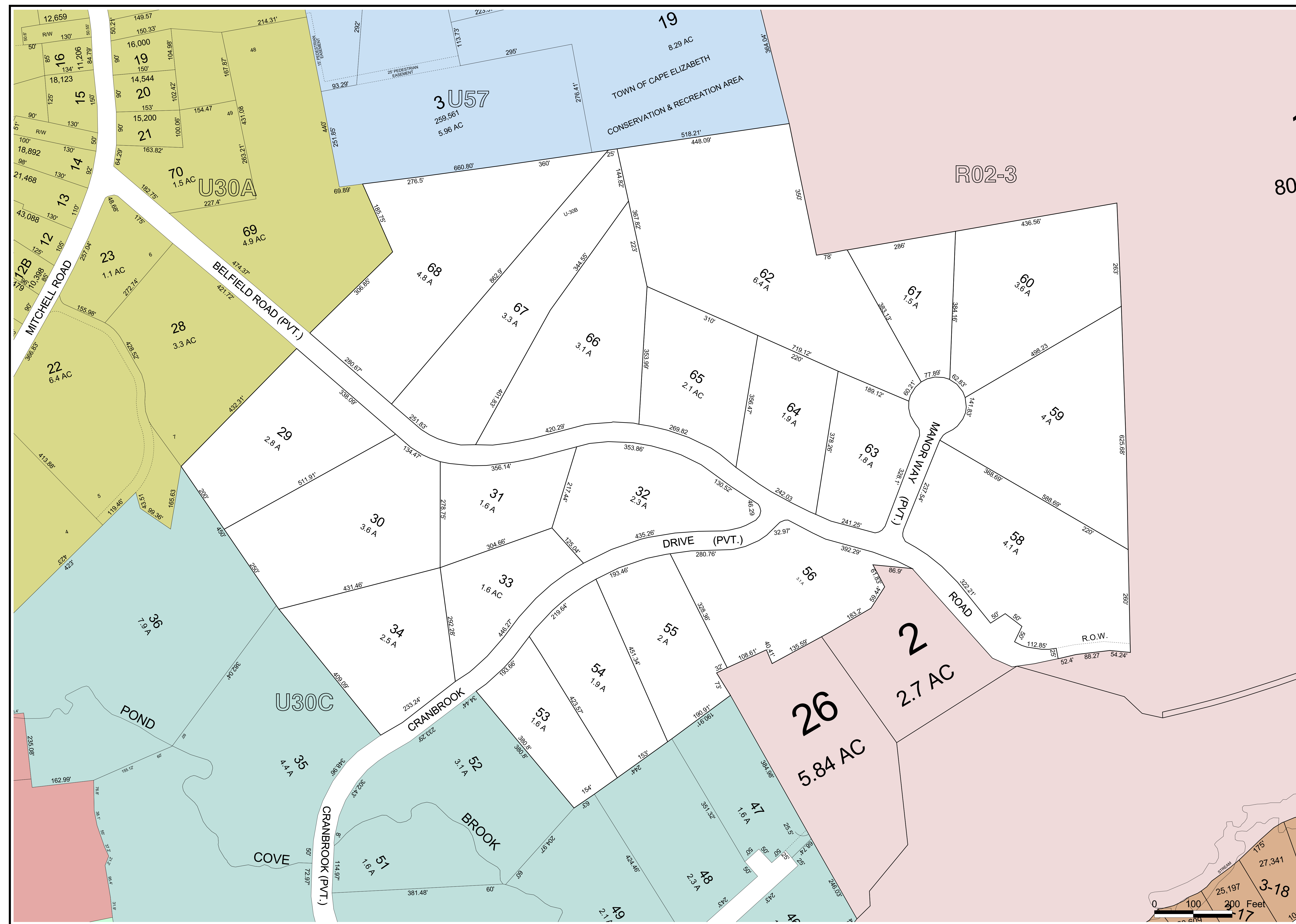
James H. Thomas
gisSolutions of Maine
Cumberland, Maine
jht@maine.r.com

These maps are intended to
be used for the purpose of Property
Tax Assessments and should not be
used for conveyances.

Scale: 1 inch = 100 feet
Revised to April 1, 2009

2009

U30B



80

R02-3

19
8.29 AC
TOWN OF CAPE ELIZABETH
CONSERVATION & RECREATION AREA

3U57
259,561
5.96 AC

U30A

12B
12
1.1 AC

69
4.9 AC

22
6.4 AC

28
3.3 AC

29
2.8 A

30
3.6 A

31
1.6 A

32
2.3 A

33
1.6 AC

34
2.5 A

35
4.4 A

36
7.9 A

37
1.6 A

38
2.3 A

39
2.1 A

68
4.8 A

67
3.3 A

66
3.1 A

65
2.1 AC

64
1.9 A

63
1.8 A

62
6.4 A

61
1.5 A

60
3.6 A

59
4 A

58
4.1 A

56
1.4

55
2 A

54
1.9 A

53
1.6 A

52
3.1 A

51
1.6 A

47
1.6 A

48
2.3 A

49
2.1 A

2
2.7 AC

26
5.84 AC

0 100 200 Feet

17

POND

COVE

CRANBROOK
BROOK

U30C

MITCHELL ROAD

BELFIELD ROAD (PVT.)

DRIVE (PVT.)

MANOR WAY (PVT.)

ROAD

R.O.W.

12,659
16
11,206
18,123
15
15,000
21
15,200
14
18,892
13
21,468
12
43,088

19
16,000
20
14,544
15,200
14
18,892
13
21,468

23
1.1 AC
28
3.3 AC
22
6.4 AC

29
2.8 A
30
3.6 A
31
1.6 A
32
2.3 A
33
1.6 AC
34
2.5 A
35
4.4 A
36
7.9 A

37
1.6 A
38
2.3 A
39
2.1 A

47
1.6 A
48
2.3 A
49
2.1 A

51
1.6 A
52
3.1 A
53
1.6 A
54
1.9 A
55
2 A
56
1.4

60
3.6 A
61
1.5 A
62
6.4 A
63
1.8 A
64
1.9 A
65
2.1 AC
66
3.1 A
67
3.3 A
68
4.8 A

69
4.9 AC
70
1.5 AC

71
1.5 AC
72
1.5 AC
73
1.5 AC
74
1.5 AC
75
1.5 AC
76
1.5 AC
77
1.5 AC
78
1.5 AC
79
1.5 AC
80
1.5 AC